

## LUBRICATION

*The row units, presswheels, and seeder shaft bearings are equipped with sealed bearings and need no greasing. It is recommended to wash the seeders and seed hopper with water before each season. Do not use lubrication on the seeders.*

## COULTERS

**Grease coultter hinge casting weekly  
(1 location per coultter).**

**Grease coultter hub each 500 acres  
(1 location per coultter).**



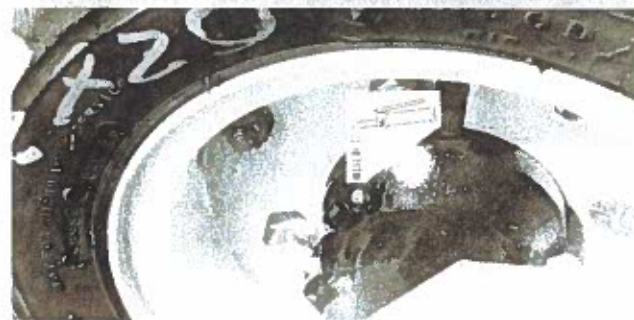
## GAUGE WHEEL PIVOT ARM

**Grease pivot arm weekly  
(2 locations per gauge wheel).**



## TRAC-DRIVE HUB

**Grease Trac-Drive hub weekly  
(1 location).**



## HITCH CLEVIS

**Grease hitch clevis weekly  
(1 location).**

